

YELLOWJACKET-B/A/N/G

HANDHELD 802.11 B/A/N/G WI-FI ANALYSIS

Yellowjacket® B/A/N/G is a wireless test receiver system that demodulates, sweeps, analyzes, and optimizes all popular 802.11 Wi-Fi network standards including 802.11b/g (2.4 GHz), 802.11a (5 GHz) and even 802.11n. The calibrated receiver is a passive measurement device that is network independent so it remains "invisible" to any Wi-Fi network. **Yellowjacket® B/A/N/G** is also a powerful spectrum analyzer that measures RF energy (2.0-4.0 & 4.9-5.9 GHz) allowing not only detailed interference analysis but the ability to see the "whole picture" of your 2.4 and 5 GHz network WISP or hotspot. When equipped with a DF (Direction Finding) antenna, **Yellowjacket® B/A/N/G** locates and pinpoints rogue APs and STAs and even detects spurious interference from sources such as microwave ovens and cordless phones. Powerful packet analysis features such as Multipath (Ec/Io), Delay Spread, Channel Frequency Response (CFR), SSID and Received Signal Strength Indicator (RSSI) give **Yellowjacket® B/A/N/G** the distinction of being the only true handheld RF spectrum protocol analysis and direction finding tool accurate to within 1 dB. **Yellowjacket® B/A/N/G** functions as a complete WLAN analysis system offering both measurements made through packet demodulation and spectrum analysis in a rugged, handheld package.

Shown with
optional Direction
Finding Antenna

FEATURES:

- Measure 2.4 GHz coverage for DSSS and OFDM WLANs within the IEEE 802.11b/n/g standard
- Measure 5 GHz coverage for OFDM WLANs within the IEEE 802.11a standard
- Receive, filter and process DSSS and OFDM studies all in a handheld Windows Mobile OS® environment
- 802.11 packet Demodulation tools for Channel Frequency Response and Antenna Alignment
- Complex AP / STA list analysis including Multipath, Absolute Channel, and SSID
- Full Spectrum Analysis including Power Triggers, Waveform Traces & Full Spectrum Sweep
- Measure RSSI in true dBm with a calibrated receiver
- Multipath and RSSI; narrow band & total channel power
- Rechargeable Internal Li-Poly battery or A/C power
- MAC Security Authorization Lists/Detection/Alarms as well as WEP and WPA encryption detection
- Internal GPS receiver for realtime geo-coding of all measurements
- Optional Direction Finding antennae for locating rogue APs, WLAN hackers and spurious RF interference
- Optional RJ-45 Ethernet Port for fast, networked PC communication
- Optional Swarm™ mapping/validation coverage analysis software



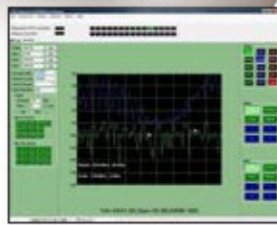
Optional 2.4 GHz Optional 5 GHz



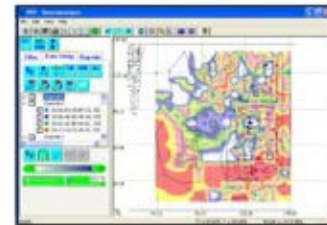
Optional 30 dB Attenuator



Optional 12V Power Inverter



Optional Remote Monitoring Software



Optional Swarm™ Mapping Analysis Software

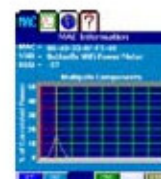
2.0-4.0 GHz
Full Spectrum Analysis
4.9-5.9 GHz

YELLOWJACKET-B/A/N/G

HANDHELD 802.11 B/A/N/G WI-FI ANALYSIS

DEMODULATOR SPECIFICATIONS

BANDS SUPPORTED	2.4-2.5 GHz, 5-5.8 GHz (includes 802.11a, 802.11n and 802.11h)
RF SENSITIVITY (Wide Band)	-20 to -90 dBm
PACKET PREAMBLE DEMODULATOR and ANALYZER	Multipath Measurement and Graphical Display
CORRELATED POWER MEASUREMENTS	RATIO
Correlated Power (dBm)	-30 dBm : -100 dBm
Correlated Power to Total Power Ec/Io (dB)	0 dB : -10 dB
Total Channel Power Measurement	-20 dBm : -80 dBm



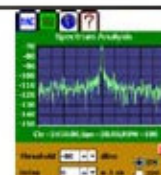
SPECTRUM ANALYZER SPECIFICATIONS

BANDS SUPPORTED	2.0 - 4.0 GHz & 4.9 - 5.9 GHz (includes 802.11a, 802.11n and 802.11h)
AVERAGE NOISE FLOOR (NO INPUT)	< -100 dBm (reference level -70 dBm, resolution bandwidth = 50 kHz)
DYNAMIC RANGE	> 40 dB
LEVEL ACCURACY	+ 1.5 dB (25° C)
MAX INPUT (SAFE)	+ 0 dB
MAX INPUT (NO SATURATION)	- 20 dB
REFERENCE LEVEL	-20 to -70 dBm (10 dB steps)
DISPLAY (IPAQ)	see HX2700 specifications
OPERATING SYSTEM (IPAQ)	Windows® Mobile 5.0



TRIGGERING

USER CONTROL	auto or manual
PACKET/INTERFERENCE TRIGGER	trigger analyzer when input power ≥ threshold (20 MHz span)
TRIGGER THRESHOLD	user settable in dBm
TRIGGER DELAY	user settable in μS



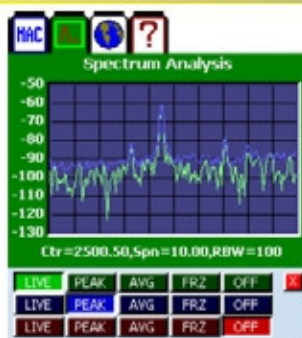
GENERAL SPECIFICATIONS

INTERNAL GPS RECEIVER	12-channel GPS receiver
INPUT CONNECTOR	SMA Female, 50 Ohm
POWER	Li-PO, AC or DC
RUNTIME INTERNAL BATTERY	> 3 hours
RECHARGE TIME	< 3 hours



PHYSICAL SPECIFICATIONS

WEIGHT	3 lbs.
DIMENSIONS	3"H x 5"W x 9"L (water resistant, high impact ABS plastic case)



SPECTRUM ANALYSIS

Full spectrum sweep
Preset channel sweep
Variable Resolution Bandwidth
Set Reference Level
Channel Power
Screen Averaging
Video Smoothing
Marker/Delta Functions
Trigger
Multiple Traces
Spectrogram
Histogram
Persistence

#	CH	MAC/SSID/CHAN ID	RSSI	S/N
1	6	00-14-D1-C3-BF-07 TRENDnetS3 TRENDware International, Inc.	-59	39
2	11	00-19-E3-FA-98-8A Apple Network Palkoba Apple Computer	-35	63
3	1	00-40-33-AF-F2-9D Rivco ADDITRON TECHNOLOGY CO.	-47	50

<Page 1 of 1> < 3 items> < Ch 2 >

CHAN SORT PGDN PGUP

PACKET DEMODULATION:

Survey sweep of channels for all APs
Individual channel analysis of APs or STAs
Absolute channel
W.I.S.P. antenna alignment
RSSI for each AP/STA in true dBm
Multipath in chips and nanoseconds
AP manufacturer's ID

Security	
34-ef-a3-7a-22-0f	Add
<input checked="" type="checkbox"/> Enable Security	
AUTHORIZED	
00-14-D1-C3-BD-5B	Delete
00-1E-52-F4-FB-16	
00-11-24-03-5B-D1	
00-05-3C-06-F7-6C	
UNAUTHORIZED	
00-1B-9E-A7-3A-C7	Auth
00-40-33-AF-F6-E9	
Clear	
Generate Authorized List	
Save List	Open List

NETWORK SECURITY:

Authorize or Unauthorize MAC addresses
Generate valid AP list automatically
Upload AP list from PC
Flag invalid APs as "suspect"
Detects WEP encryption
Detects WPA encryption